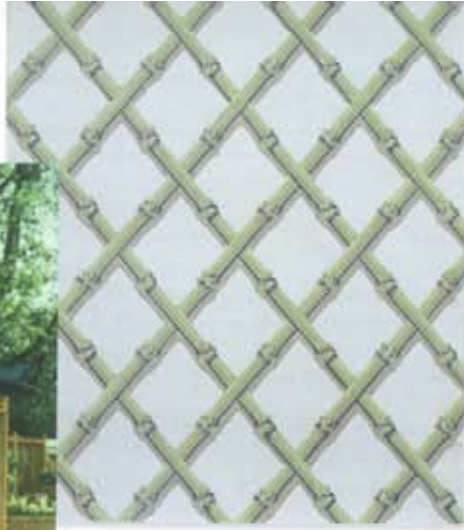


inspiration



1 Ever since the East India Company's ships stopped arriving in Europe laden with delectable artefacts, our appetite for all things Oriental has abated – but never totally. This 'Chinoiserie' gazebo (from £10,300) from Andrew Crace (01279 842685; andrewcrace.co.uk), which features upturned eaves similar to those on Frederick Augustus III's Chinese Pavilion (page 144), is in demand today – as is Zuber's 'Brighton' wallpaper (£195 per 10 m roll), a good match for the one in the unusual royal summerhouse. Ring 020 7824 8265, or visit zuber.fr.

2 *Life's Balance with Money*. A perennial dilemma. It's also the subject and title of this photogravure (\$8,000 for one of a limited edition of 45) by John Baldessari, one of the artists favoured by Kate and Andy Spade (page 159). Ring Brooke Alexander Galleries on 001 212 925 4338, or visit baeditions.com.

3 Using bold fabrics takes courage and a willingness to make mistakes. Judging by the décor of Kate and Andy Spade's home (page 150) – not to mention their warehouse full of purchases that haven't made the cut – the couple have both qualities. In the master bedroom and kitchen, they've used fabrics similar to Robert Allen's 'Granito' stripe in cherry or black (£13.20 per m; 020 7352 0931; robertalldesign.com); and in the entrance, Brunswick & Fils's 'Bengali 79749-4' (£44 per m; 020 7351 5797; brunschwig.com).

4 This '0215' silver candlestick's resemblance to those in the home of Kate and Andy Spade (page 155) is no coincidence. It, like them, is from a Biedermeier-inspired collection by Ted Muehling in collaboration with ER Butler, better known for its reproduction period American hardware. It costs \$936. Ring 001 212 9253565, or visit erbutler.com.

5 Oka's wares are the furniture equivalent of Kate Spade shoes and handbags – modern in a classic, non-gimmicky way. Which may explain why, when she decorated her apartment (page 152), the American was drawn to items in the spirit of the homeware company, like this 'Manchu' coffee table (£350). Ring 0870 160 6002, or visit okadirect.com ■