



fig. bf



fig. vf



fig. va



fig. eg



fig. og



fig. en



fig. rb

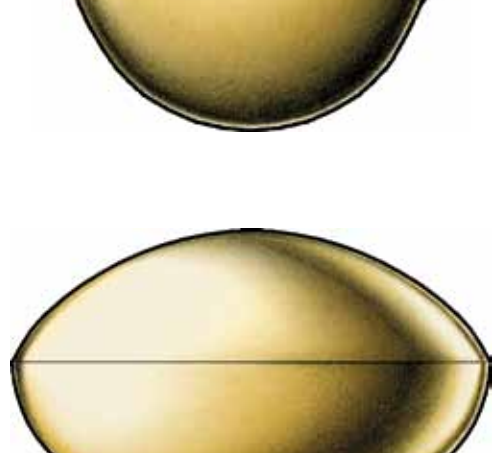


fig. or



fig. lr

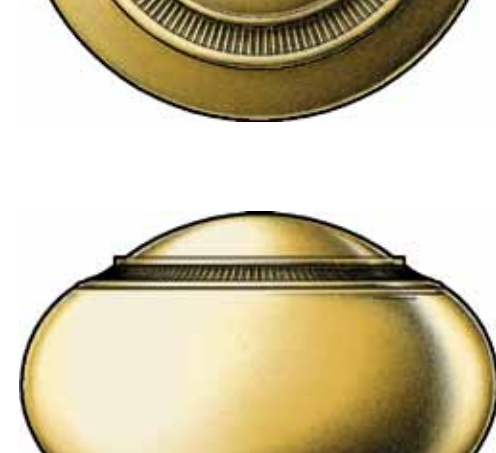


fig. ky



fig. lk



fig. dk



fig. by



fig. do

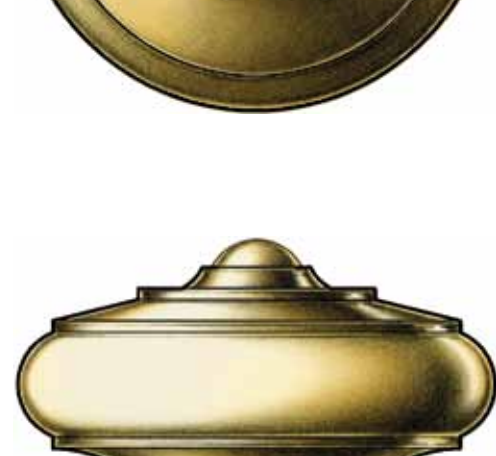


fig. kb



fig. lo



fig. sm



fig. fr

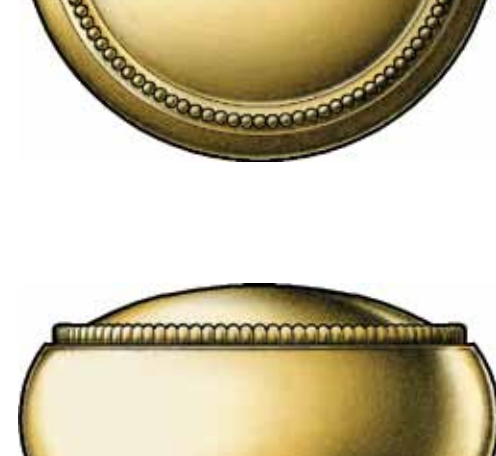


fig. nb



fig. kb



fig. nk



fig. nj

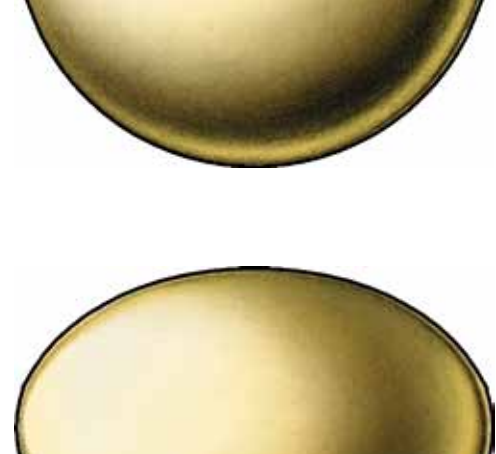


fig. vc



fig. nm



E. R. BUTLER & Co.

W.C. Vaughan Co. Collection

E. R. BUTLER & Co. is pleased to offer the W.C. Vaughan Company's complete line of Early American and Georgian period hardware. For over a century, the W.C. Vaughan Company manufactured high quality architectural, builders' and furniture hardware from its unique design archive, a collection of early nineteenth-century hardware patterns and drawings from houses throughout New England and the Atlantic seaboard. Renowned for its expertise, the W.C. Vaughan Company always relied upon the most precise tooling and best manufacturing methods available, supplying hardware for such restoration projects as Colonial Williamsburg. As W.C. Vaughan's successor, E.R. Butler & Co. continues to produce hardware of superior design, workmanship and finish so that the reproduction conveys the distinct qualities of the original. Early American and Georgian period door knobs range in size from 3 inch diameter centre knobs to 1 1/2 inch diameter screen door knobs. Cabinet and fine furniture knobs range in size from 1 1/2 inch diameter cabinet knobs to 3/4 inch diameter drawer knobs. Available in many decorative finishes, all design series are fully complimented by architectural trim including hinges, locks, cane bolts, cylinder rings and covers, key escutcheons and covers, thumb turns, doorstops, etc.

WWW.ERBUTLER.COM

CATALOGUES AVAILABLE TO THE TRADE SHOWROOMS BY APPOINTMENT ONLY